

Machine Fencing System

Machine Fencing System (MFS)



The **HepcoMotion MFS Machine Fencing System** compatible with our **MCS** aluminium profile product range enables cost effective barriers to be constructed around machine installations such as Gantries, Pick and Place equipment and floor mounted robot systems.

Conforming to current Industry standards this maintenance free system is easy to construct and offers a lower cost alternative to similar systems.

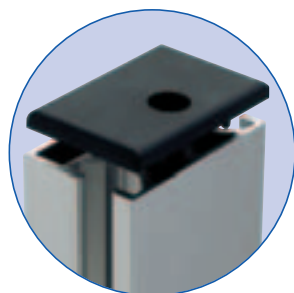
HepcoMotion's MFS system can be supplied as pre-assembled panels to the customer's drawings or as individual components for the customer to machine and assemble in their own workshop. Delivery is fast with all major components carried ex-stock.

We would be pleased to discuss your future requirements for standard **MFS** components as well as specific non standard items such as locks, switches and specialist panel requirements.

Introducing the MFS Machine Fencing System

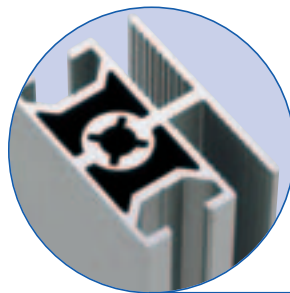
The HepcoMotion MFS Machine Fencing System compatible with our MCS aluminium profile product range provides economical barriers around machine installations such as Gantries, Pick and Place equipment and floor mounted robot systems

Conforming to current Industry standards this maintenance free system is easy to construct and offers a lower cost alternative to steel fence constructions.



End cap

End caps to close off the slot profiles and vertical profile sections.



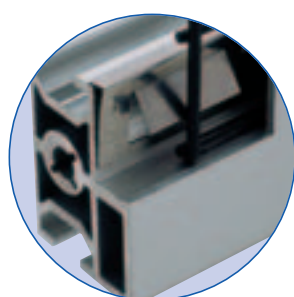
Two-slot profile

Provides a mid section support either vertical or horizontal to break up large single frames and ensure maximum rigidity to the assembled mesh/panel.



One-slot profile

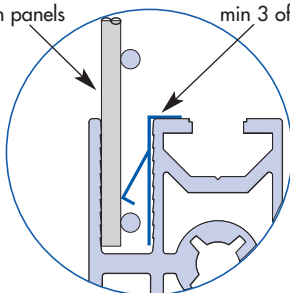
A light but very rigid section used for the main frame surround. A deep 8mm wide slot allows an extensive range of mesh and panel options to be fitted in combination with the **Panel retaining clip**. An 8mm T-slot allows further attachment of additional accessories should the need arise.



Mesh/Panel retaining clip detail

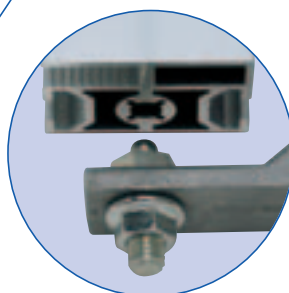
3mm welded mesh or 2-6mm panels

Panel retaining clip, min 3 off/metre



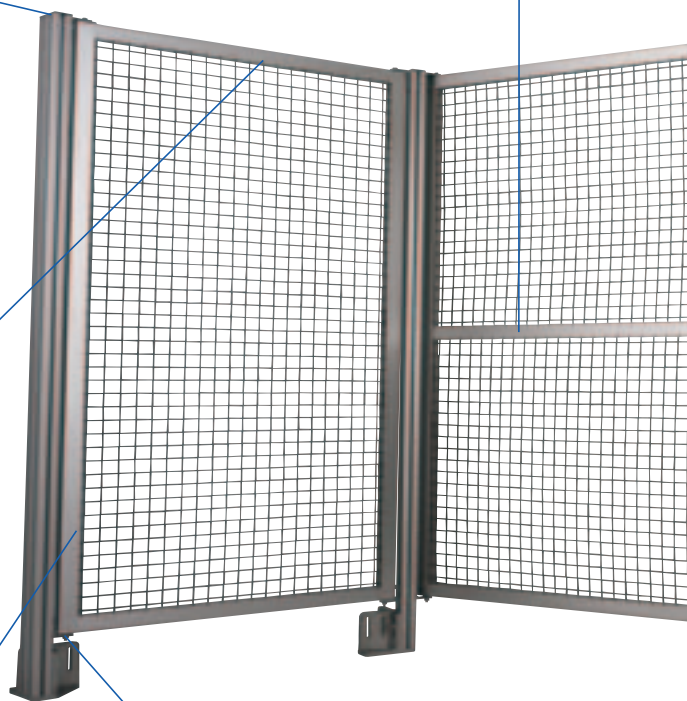
Panel retaining clip

This unique fixing clip developed by Hepco will ensure that almost all types of wire mesh sheeting or polycarbonate/steel panels which are fitted within the 8mm slot profiles are securely retained and will not rattle or vibrate. Designed for 2-6mm sheet panels and all 3mm wire mesh the sprung feet of the clip ensure universal fitting into the profile slot and the location teeth ensure the clips cannot become dislodged. (8mm panels and 4mm wire mesh do not normally require the additional use of these clips.) The number of clips needed is dependant on the panel material being used.



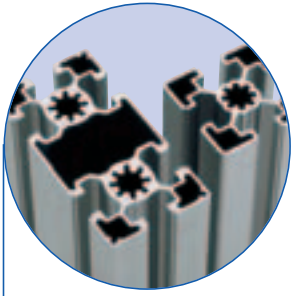
Panel fixing kit

A complete kit of parts for securing your fencing panel to its vertical post support. The lower bracket with its domed location stud is fully adjustable to allow for small misalignments between the vertical posts. Two bolts at the top are all that is necessary to firmly secure the fencing panel in place no matter what size of panel you are using. The swivel action of the panel fixing kit allows panels to be laid out in at any angle not just 90 degrees.



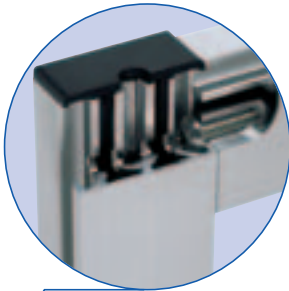
Vertical post

Utilising our MCS 45 Light and 45/90 Light section the vertical post is secured into the **Foundation Block** with standard T-Bolts and Nuts. The 45/90 Light provides additional support and rigidity where long unsupported runs are necessary, corners, returns and around door frames. The 10mm T-slot allows the panel mounting kit, hinges etc. to be speedily assembled using our standard or sprung loaded T-nuts.



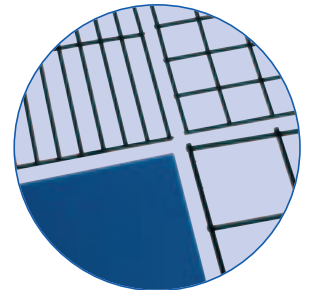
Connection screws

Used to secure **slot profiles** together and provide a strong and hidden 90-degree joint.



Sliding doors

A range of sliding door movements can be developed into the Machine Fencing System with or without a lower support profile. The latter is especially useful where clear access is required through the enclosure for say forklift trucks etc.



Panel options

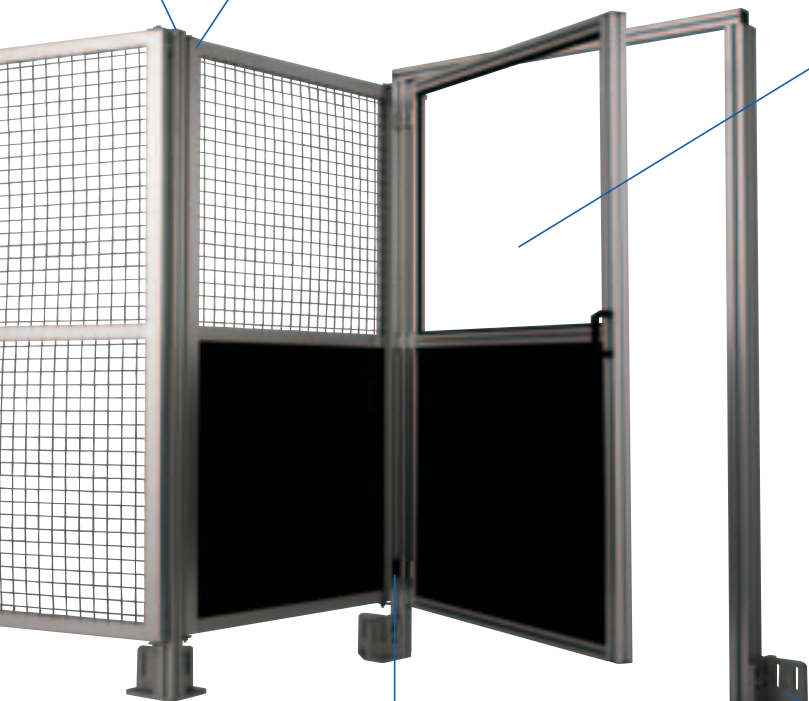
HepcoMotions Machine Fencing System has been developed to allow designers to incorporate an extensive range of standard wire mesh and sheet panel options (special panels to customers design on application) for almost any industrial situation. Panels up to 8mm thick can be fitted directly into the slot profiles.

Wire mesh

Wire mesh in 3mm Standard Welded either self-coloured or black powder coated 25mm sq, 38mm sq, 50mm sq and 75 x 13 letterbox. (Non-standard 4mm, woven and special painting on request).

Polycarbonate panels

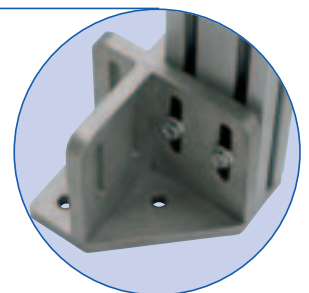
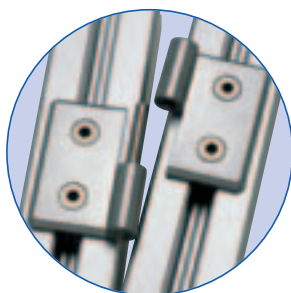
5 and 6mm in clear and coloured versions including dense foam sheet ideal for fencing structures where through visibility is not a requirement.



Die cast lift off hinge

These plated hinges provide a strong and flexible method of attaching doors or windows and other movable panels within your fencing system.

Available in **L/H and R/H Lift off** options as well as a **fixed** version all supplied complete with the necessary fixings to our standard vertical posts.



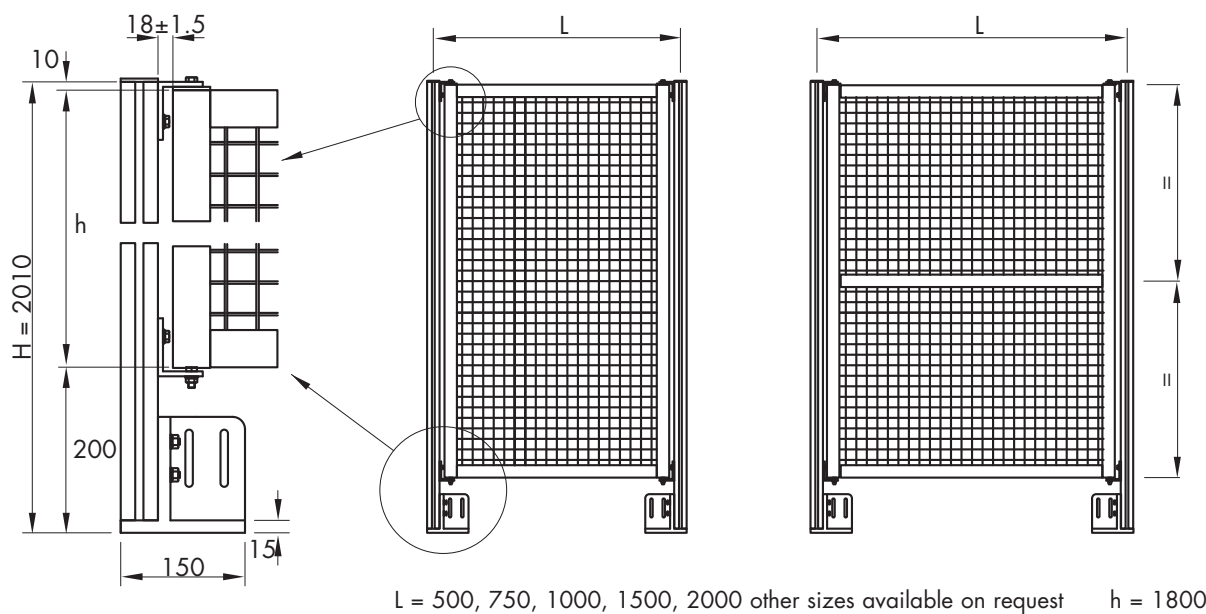
Foundation Block Kit

The foundation block will accept the **45L** and **45/90L** **Vertical posts** and is universally handed for all mounting requirements. Supplied complete with necessary **T-Bolts and Nuts**.

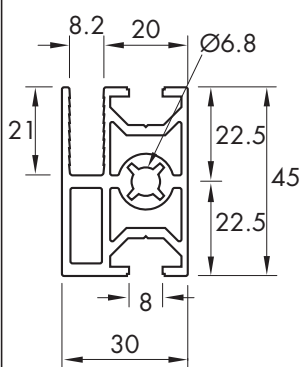
MCS Machine Construction System and MFS Machine Fencing System

Machine Fencing System

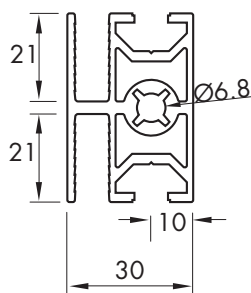
MFS Standard Panel sizes



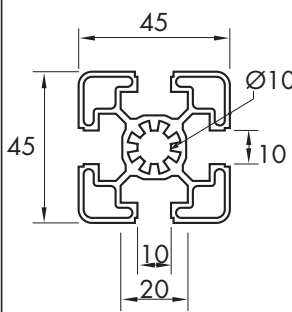
Fencing Profile (1 Slot)
0-133-7001



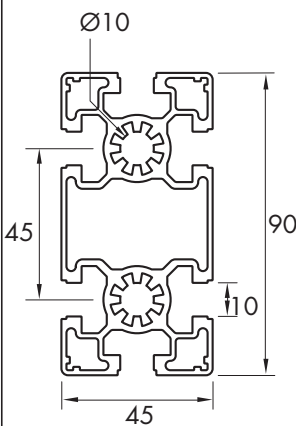
Fencing Profile (2 Slots)
0-133-7002



Profile 45x45L
0-132-4546



Profile 45x90L
0-132-4591



Technical Data

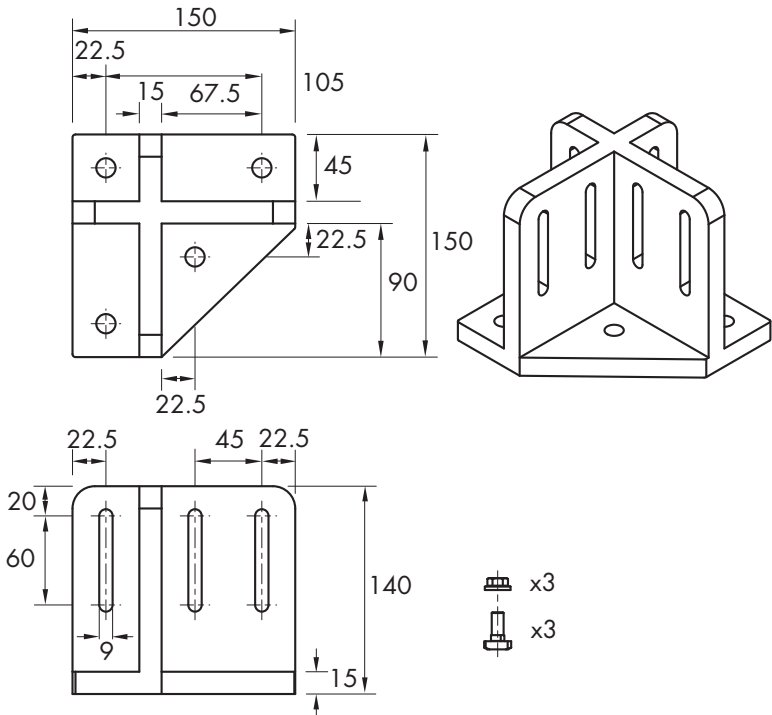
	Fencing Profile (1 slot)	Fencing Profile (2 slots)	Profile 45x45L	Profile 45x90L
Max. Length	5600mm	5600mm	5600mm	5600mm
Mass	1.35kg/m	1.3kg/m	1.5g/m	3.15kg/m

Machine Fencing System

Foundation Block Set

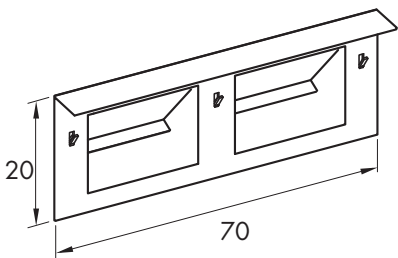
1-242-7700 S

Complete with T-Bolt fixings



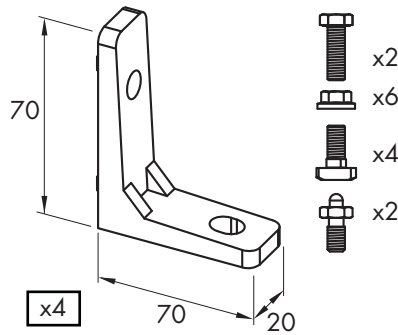
Mesh/Panel Retaining Clip

1-243-7003



Fixing Bracket Set

1-243-7001S



Sponge Retaining Strip

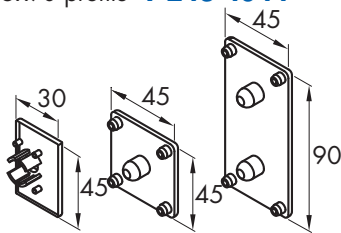
1-242-2510

(Retaining mesh in 45 profiles
10mm T-slot)



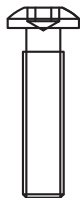
End Caps

Slot profile **1-243-7002**
45x45 profile **1-243-4042**
45x90 profile **1-243-4044**



Connection Screws

Connection screw for slot profiles
1-242-1034 (M8)
Connection screw for
45 & 90 profiles
1-242-1005 (M12)



Technical Data

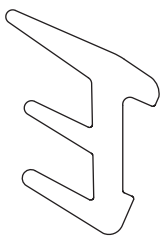
	Foundation Block Set	Fixing Bracket Set
Material	Aluminium	Aluminium
Finish	None	None
Mass	1.9kg	0.3kg/m

MCS Machine Construction System and MFS Machine Fencing System

Machine Fencing System

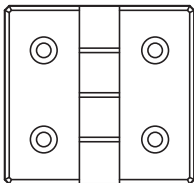
Glazing Strip

See page 30



Die Cast Hinges

See page 32.
Lift off example page 37

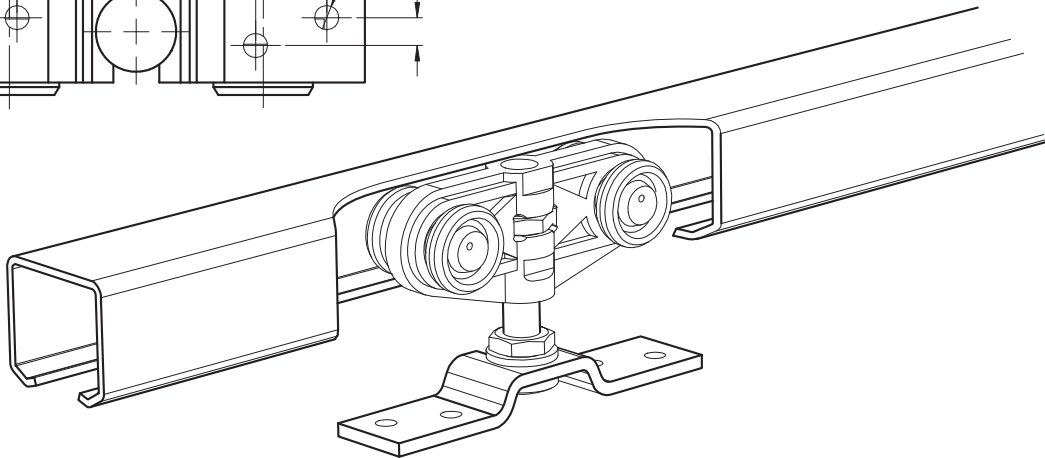
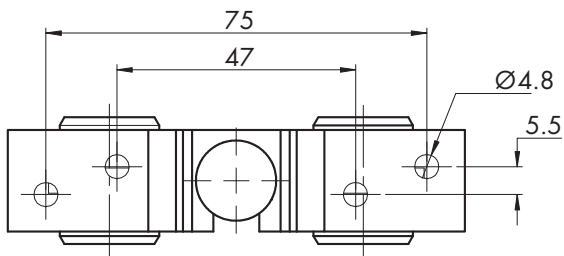
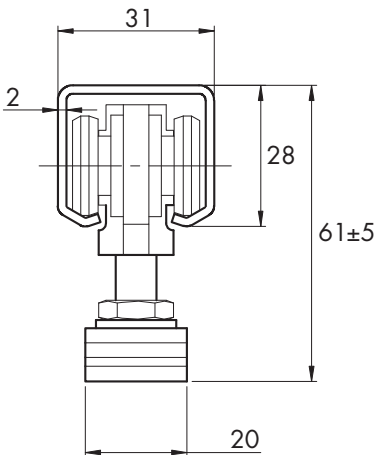
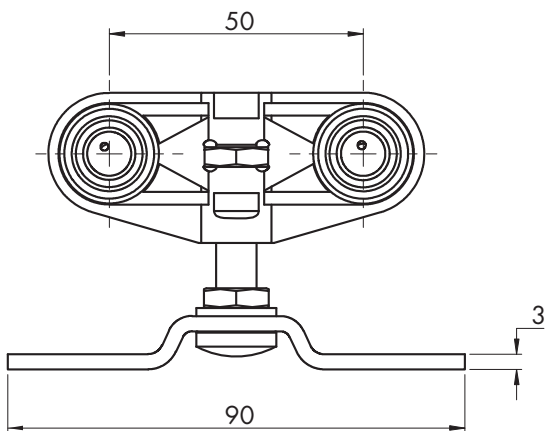


Handle for 45 profiles

See page 33

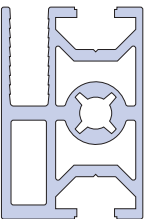
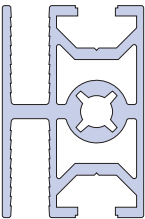
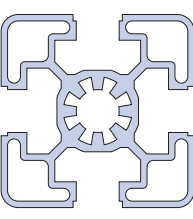
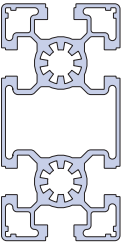
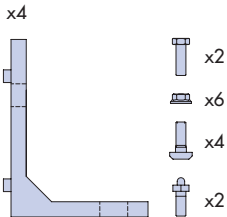
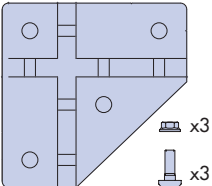


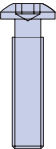
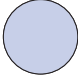
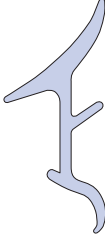

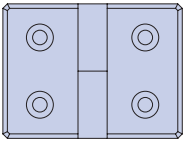
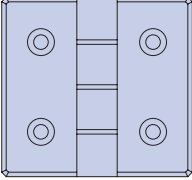


Sliding Door System



For further details please contact our Technical Sales Team.

Ordering Details

0-133-7001 One slot profile (random 5.6m) 	0-133-7002 Two slot profile (random 5.6m) 	0-132-4546 45x45 Light profile Random 5.6m 	0-132-4591 45x90 Light profile Random 5.6m 
1-243-7001S Fixing Bracket set 	1-242-7700S Foundation block set 	1-243-7003 Mesh/panel retaining clip 	End caps Slot profile 1-243-7002 45x45 profile 1-243-4042 45x90 profile 1-243-4044 
1-242-1034 Connection screw for slot profiles 1-242-1005 Connection screw for 45 & 90 profiles 	1-242-2510 Sponge retaining strip (retaining mesh in 45 profiles 10mm T-slot) 	1-242-1057 Glazing strip 	1-243-0033 Handle for 45 profiles (order with 2 off M8 T-nut 1-242-1002 & M8x20 cap head screw) 
1-243-7005S Lift off hinge set RH 1-243-7006S Lift off hinge set LH 	1-243-8085S Fixed hinge 	<p>HepcoMotion's MFS system can be supplied as pre-assembled panels to the customer's drawings or as individual components for the customer to machine and assemble in their own workshop. Delivery is fast with all major components carried ex-stock</p> <p>We would be pleased to discuss your future requirements for standard MFS components as well as specific non standard items such as locks, switches and specialist panel requirements.</p>	